

OFFICE SPACE AVAILABLE For Lease



2,650 +/- Sq Ft Available
5811 E. Truman Road, Kansas City, Missouri



Estimated Population
179,463

Average Household Income
\$39,513

Five Mile Radius

- High traffic area
- Located in medical building
- Multi-tenant, single story building
- Ample parking
- High traffic area

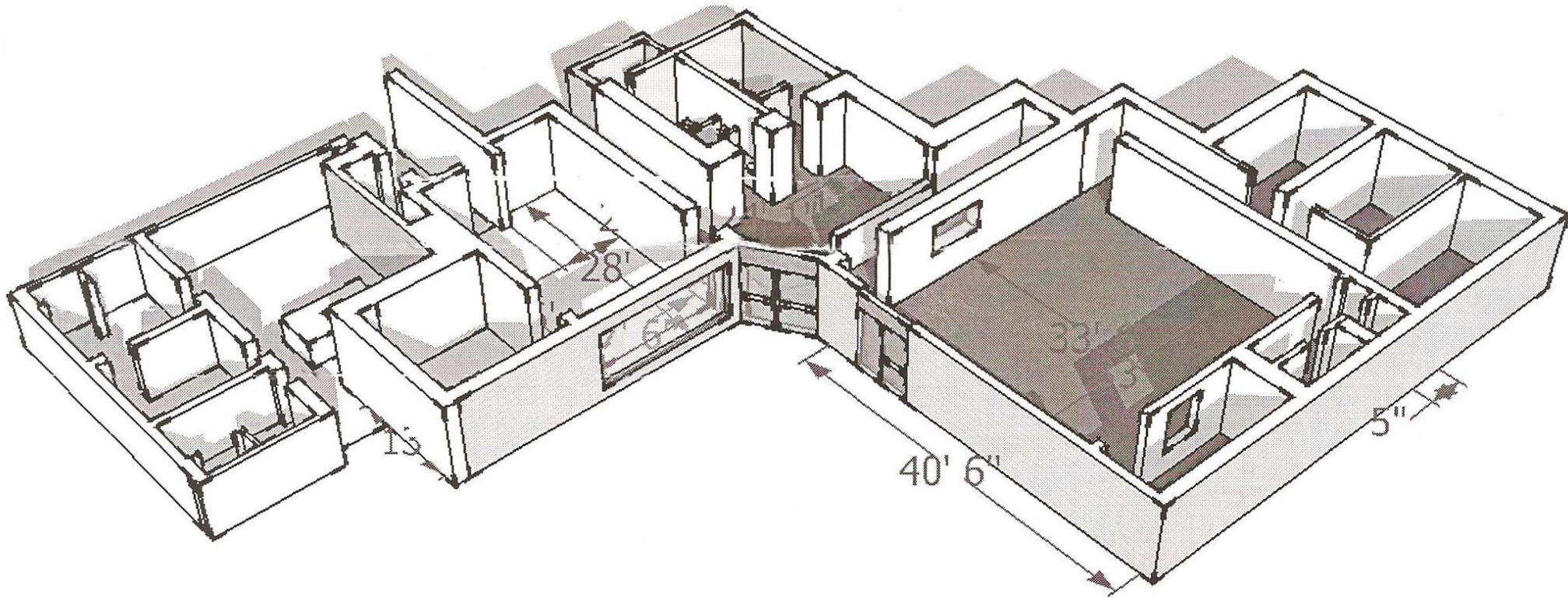
BLOCK & COMPANY, INC., Realtors
4963 NE Goodview Circle, Suite C
Lee's Summit, Missouri 64064

816.753.6000

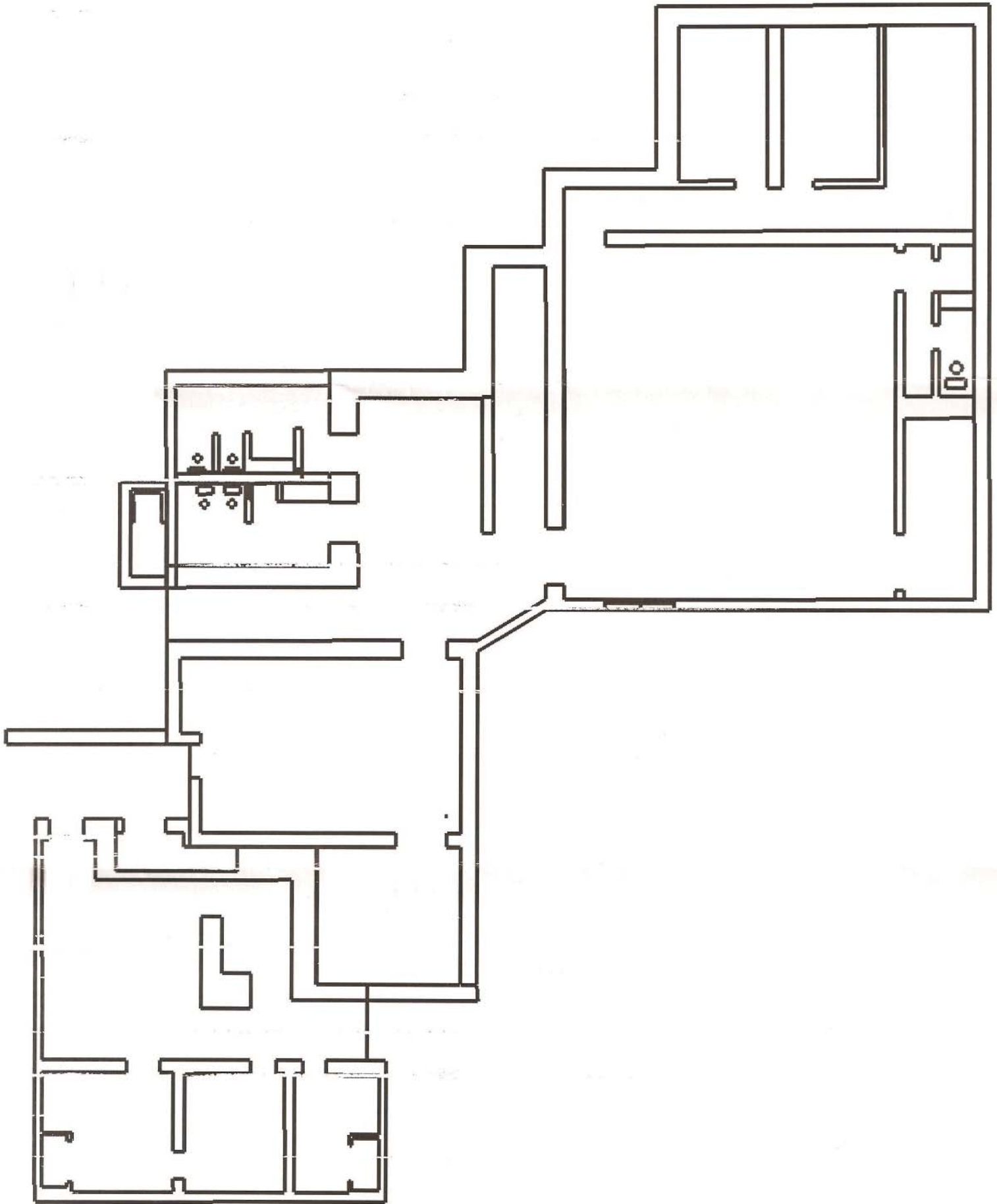
For Information Contact:

William Glasgow
816.412.7210
wglasgow@blockandco.com

5811 E. Truman Road, Kansas City, Missouri



5811 E. Truman Road, Kansas City, Missouri





Lat: 39.0936 Lon: -94.5139 Zoom: 11 mi Logos are for identification purposes only and may be trademarks of their respective companies.

©2010, SITES USA Inc., Chandler, AZ (480) 491-1112. All Rights Reserved.

5811 E. Truman Road Kansas City, Missouri

February 2010

This map was produced using data from private and government sources deemed to be reliable. The information herein is provided without representation or warranty.



SUMMARY DEMOGRAPHIC PROFILE

1990 - 2000 Census, 2009 Estimates & 2014 Projections

Calculated using Proportional Block Groups

Lat/Lon: 39.093638/-94.513919

February 2010

RS1

5811 E. Truman Road Kansas City, Missouri		1.00 mi radius	3.00 mi radius	5.00 mi radius
POPULATION	2009 Estimated Population	13,016	76,870	179,463
	2014 Projected Population	12,288	73,262	174,047
	2000 Census Population	14,295	82,427	190,090
	1990 Census Population	14,065	86,340	204,455
	Historical Annual Growth 1990 to 2009	-0.4%	-0.6%	-0.6%
	Projected Annual Growth 2009 to 2014	-1.1%	-0.9%	-0.6%
	2009 Median Age	29.8	33.3	35.5
HOUSEHOLDS	2009 Estimated Households	4,680	29,121	75,709
	2014 Projected Households	4,418	27,764	73,654
	2000 Census Households	5,112	30,955	79,003
	1990 Census Households	5,536	34,003	84,642
	Historical Annual Growth 1990 to 2009	-0.8%	-0.8%	-0.6%
	Projected Annual Growth 2009 to 2014	-1.1%	-0.9%	-0.5%
POPULATION BY RACE	2009 Estimated White	46.6%	40.6%	49.8%
	2009 Estimated Black or African American	31.5%	43.4%	38.4%
	2009 Estimated Asian & Pacific Islander	3.8%	3.0%	2.2%
	2009 Estimated American Indian & Native Alaskan	0.5%	0.5%	0.5%
	2009 Estimated Other Races	17.6%	12.5%	9.2%
	2009 Estimated Hispanic	28.9%	20.1%	14.8%
INCOME	2009 Estimated Average Household Income	\$ 33,527	\$ 36,229	\$ 39,513
	2009 Estimated Median Household Income	\$ 27,068	\$ 30,302	\$ 34,440
	2009 Estimated Per Capita Income	\$ 12,129	\$ 14,225	\$ 17,215
EDUCATION (AGE 25+)	2009 Elementary	8.0%	6.3%	4.6%
	2009 Some High School	20.5%	17.4%	13.9%
	2009 High School Graduate	38.1%	37.0%	36.0%
	2009 Some College	17.7%	20.4%	20.9%
	2009 Associates Degree Only	4.2%	5.3%	5.9%
	2009 Bachelors Degree Only	7.6%	9.2%	12.1%
	2009 Graduate Degree	4.0%	4.4%	6.5%
BUSINESS	Number of Businesses	291	2,292	10,630
	Total Number of Employees	3,532	38,648	218,786
	Employee Population per Business	12.1	16.9	20.6
	Residential Population per Business	44.7	33.5	16.9

This report was produced using data from private and government sources deemed to be reliable. The information herein is provided without representation or warranty.